

Drums

# Cheek To Cheek

Irving Berlin

Arranged by Mathias Lundqvist (2004, 2009)

Swing ♩≈152

Drum staff with C-clef and first four measures. Measure 1 has a bass line with notes G<sub>2</sub>, E<sub>2</sub>, D<sub>2</sub> and a dynamic marking *f*. Measures 2-4 are marked with a slash and a diagonal line, indicating a drum fill.

Bass line notation: *f* (Bass), G<sub>2</sub>, E<sub>2</sub>, D<sub>2</sub>, G<sub>2</sub>, E<sub>2</sub>, D<sub>2</sub>. A fermata is placed over the final G<sub>2</sub> note.

**A**

Drum staff with C-clef and first four measures. Measures 2-4 are marked with a slash and a diagonal line, indicating a drum fill.

Bass line notation: G<sub>2</sub>, E<sub>2</sub>, D<sub>2</sub>, G<sub>2</sub>, E<sub>2</sub>, D<sub>2</sub>. A fermata is placed over the final G<sub>2</sub> note.

"1-3 feel" ad lib

Drum staff with C-clef and four measures. The first two measures contain quarter notes with accents (γ) on G<sub>2</sub> and E<sub>2</sub>. The last two measures are marked with a slash and a diagonal line, indicating a drum fill.

Drum staff with C-clef and six measures, all filled with a slash and a diagonal line, indicating a continuous drum fill.

1.

(8)

2.

(8)

Drum staff with C-clef and eight measures. Measures 1-4 are marked with a slash and a diagonal line. Measures 5-8 are marked with a slash and a diagonal line, indicating a continuous drum fill.

**B**

Bass walks

Drum staff with C-clef and four measures. The first three measures are filled with a slash and a diagonal line. The fourth measure contains a bass line with notes G<sub>2</sub>, E<sub>2</sub>, D<sub>2</sub> and a dynamic marking *f*.

(8)

Drum staff with C-clef and four measures, all filled with a slash and a diagonal line, indicating a continuous drum fill.

(7)

Drum staff with C-clef and seven measures, all filled with a slash and a diagonal line, indicating a continuous drum fill.

Cheek To Cheek - Drums  
(2)

**C**

*ff*

This block contains the first system of music for section C. It consists of two staves. The top staff has a melodic line starting with a quarter rest, followed by eighth notes, and a quarter note with an accent. The bottom staff shows a snare drum pattern with diagonal slashes. The dynamic marking *ff* is centered below the staves.

This block shows the continuation of the musical notation for section C, with the same two-staff structure and snare drum pattern.

**D**

*f* (Bass)

"1-3 feel" ad lib

This block contains the second system of music for section D. It features a bass line on the top staff and a snare drum pattern on the bottom staff. The dynamic marking *f* is placed below the bass line, and the text "(Bass)" is written next to it. The phrase "1-3 feel" ad lib is written above the snare drum staff.

This block shows the continuation of the musical notation for section D, with the same two-staff structure.

This block shows the continuation of the musical notation for section D, with the same two-staff structure.

*ff*

This block shows the continuation of the musical notation for section D, with the same two-staff structure. The dynamic marking *ff* is centered below the staves.

**E**

This block contains the third system of music for section E. It consists of two staves. The top staff has a melodic line with eighth notes and quarter notes. The bottom staff shows a snare drum pattern with diagonal slashes.

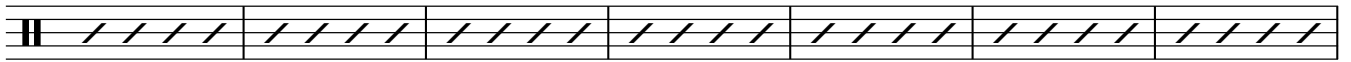
Break **2**

This block shows the continuation of the musical notation for section E, ending with a thick black bar labeled "Break" and the number "2".

Cheek To Cheek - Drums  
(3)

**F** Bass walks (Tenor solo)

(7)



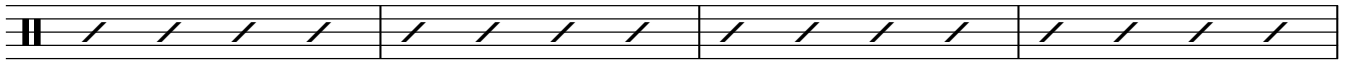
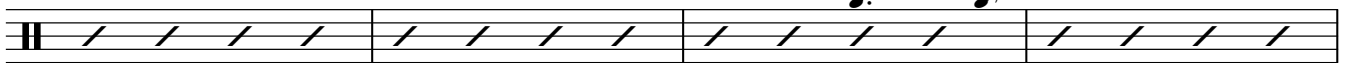
*f*



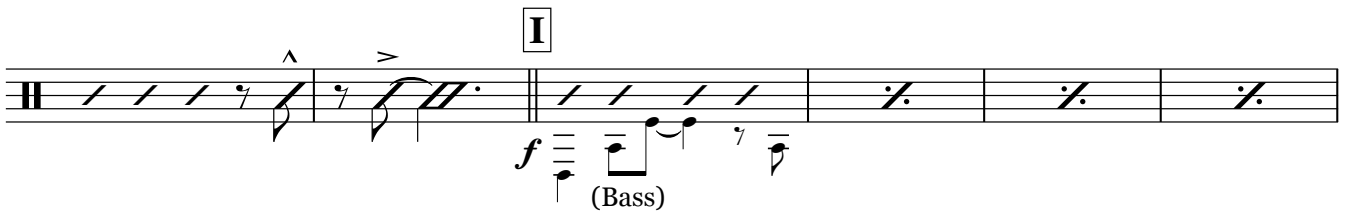
*ff*



**H**



*ff*



rit. . . . . Slow, even 8's  
(8)

