

Pno/Gtr/Bass

Mannen Mittemot

Kicki Enqvist

Original arrangement by Basse Hagström

Big band arrangement by Mathias Lundqvist (2010)

Bossa ECM style

$\text{♩} = 120$

Musical notation for the first staff, bass clef, 3/4 time signature, starting with a forte (f) dynamic marking.

Musical notation for the second staff, bass clef, 3/4 time signature, ending with an accent (^) and a breath mark (>).

A

B \flat Δ

Gm⁷

Cm⁷

F⁹sus⁴

F/E \flat

Dm⁷

G⁷(b⁹)

C⁹

F⁹sus⁴

F⁷(b⁹)

B \flat Δ

Gm⁷

Cm⁷

F⁹sus⁴

F/E \flat

Dm⁷

G⁷(b⁹)sus⁴

G⁷(b⁹)

C⁹

F⁹sus⁴

B

E \flat Δ

E \flat m⁹

A \flat ¹³

B \flat Δ

Fm⁹

B \flat 7(\sharp ₅)

E \flat Δ

E \flat m⁹

A \flat ¹³

B \flat Δ

Fm⁷

B \flat 9(\sharp ₁₁)

E \flat Δ

D⁷(b⁹)

G Δ

Em⁹

Cm⁷

Cm⁷

F⁹sus⁴

F¹³(b⁹)

Mannen Mittemot (Pno/Gtr/Bass)

- 2 -

C

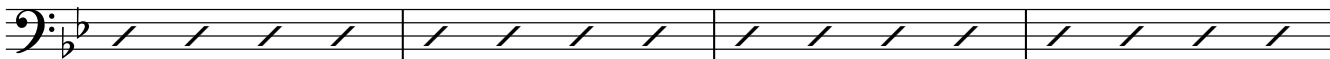
BbΔ

Gm7

Cm7

F13sus4

F/Eb



Dm7

Ab13(#11)

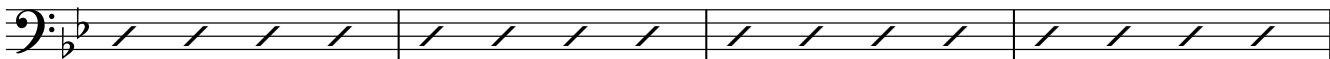
G7(b9)sus4

G7(b9)

C9

Gb13(#11)

F13(b9)



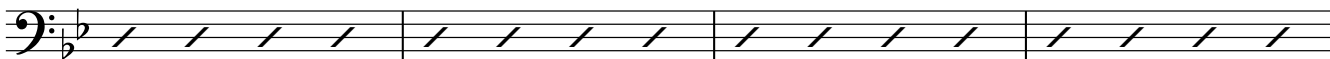
BbΔ

Gm7

Cm7

F9sus4

F/Eb



Dm7

Ab13(#11)

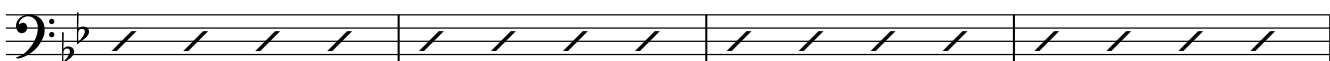
G7(b9)5

G7(b9)

C9

F13sus4

E9(#5)



D

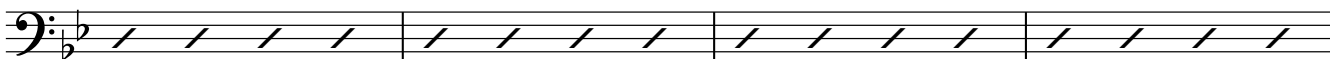
EbΔ

Ebm9

BbΔ

Fm9

Bb13(b9)



EbΔ

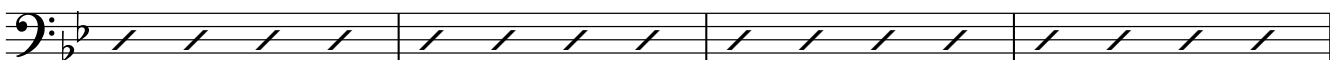
Ebm9

Ab13

BbΔ

Fm7

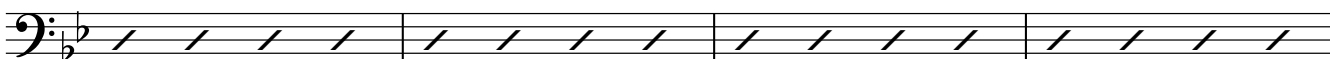
Bb13(#11)



EbΔ

D7(b9)

GΔ



Em9

Cm7

Cm7

F9sus4

F13(b9)



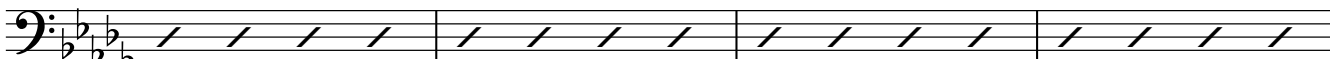
E

DbΔ

Bbm7

Ebm11

Ab13sus4



Fm11

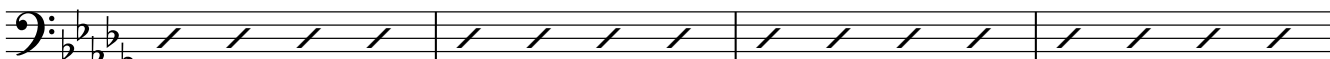
Bb7(#11)9

Bb7(b9)

Eb13(#11)

Eb9

Ab7alt.



DbΔ

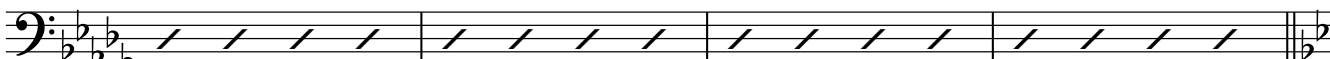
Bbm7

Ebm7

Ebm7/Db

Cm11

F7(b9)5



Mannen Mitemot (Pno/Gtr/Bass)

- 3 -



F

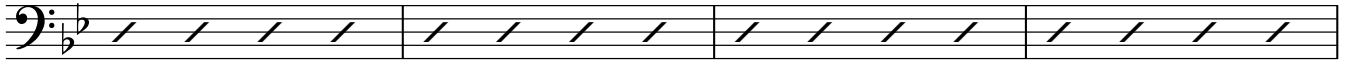
Bb Δ

Gm⁷

Cm⁷

F⁹sus⁴

F/Eb



Dm⁷

G⁷(b⁹)

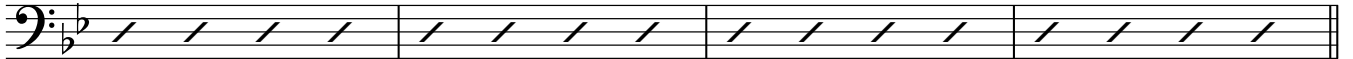
G⁷(b⁹/_{#5})

C⁹

G^b13(#11)

F¹³

B⁶/₉



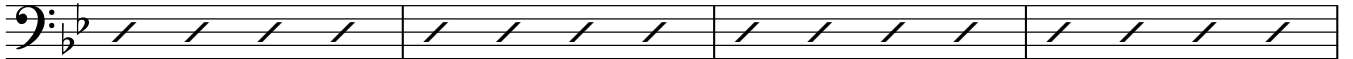
Bb⁶/₉

Gm⁷

Cm⁷

F¹³sus⁴

F/Eb



Dm⁷

A^b13(#11)

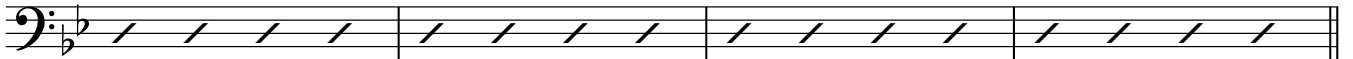
G⁷(b⁹/_{#5})

G⁷(#⁹/_{#5})

C¹³(#11)

C⁹

F⁹sus⁴



G

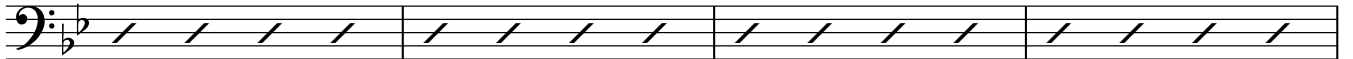
Eb Δ

Ebm⁹

Bb Δ

Fm⁹

B^b13(b⁹)



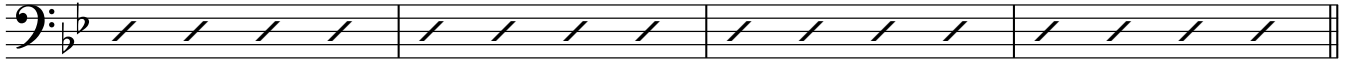
Eb Δ

Ebm⁷

Bb Δ

Fm⁷

B^b13(#11)



Eb Δ

D⁷(b⁹)

G Δ /D

D/C



rit.

Bm⁷

Am¹¹

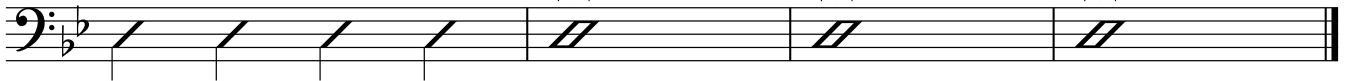
G Δ

Em⁹

Cm⁹

F¹³sus⁴

Bb Δ



mf

ff