

127

12

# THE QUEEN BEE

**BASS**

MEDIUM BLUES (J=120)

BY SAMMY NESTICO

Handwritten musical score for Bass, featuring ten staves of music. The score includes various musical notations such as notes, rests, and accidentals. Above the staves, there are handwritten chord symbols and dynamic markings. The piece is divided into sections labeled A through G.

**Section A:** Starts with a **Bow** marking and a **mf** dynamic. Chords include  $Gm$ ,  $C^9$ ,  $F\Delta$ ,  $Gm$ ,  $F\Delta$ ,  $A^7$ ,  $D^7$ ,  $A^7$ ,  $D^7$ ,  $G^9$ ,  $Dm^7$ ,  $G^9$ ,  $Gm$ ,  $A^7$ .

**Section B:** Chords include  $Gm$ ,  $F\Delta$ ,  $A^7$ ,  $D^7$ ,  $A^7$ ,  $D^7$ ,  $G^9$ ,  $Dm^7$ ,  $G^9$ ,  $Gm$ ,  $A^7$ .

**Section C:** Chords include  $Gm^7$ ,  $A^7$ ,  $D^7$ ,  $Gm^7$ ,  $A^7$ ,  $D^7$ ,  $A^7$ ,  $Gm^7$ ,  $A^7$ ,  $D^7$ ,  $C^7$ .

**Section D:** Chords include  $F\Delta$ ,  $mp$ ,  $C^7$ ,  $F\Delta$ ,  $A^7$ ,  $D^7$ ,  $Gm^7$ ,  $A^7$ ,  $D^7$ .

**Section E:** Chords include  $Gm^7$ ,  $C^7$ ,  $A^7$ ,  $E^b9$ ,  $A^7$ ,  $D^7$ ,  $Gm^7$ ,  $C^7$ ,  $Gm^7$ ,  $D^7$ ,  $C^7$ .

**Section F:** Chords include  $B^b6$ ,  $B^b$ ,  $F$ ,  $A^7$ ,  $D^7$ ,  $Gm^7$ ,  $C^7$ ,  $Gm^7$ ,  $C^7$ ,  $F\Delta$ ,  $B^b$ ,  $F\Delta$ ,  $A^7$ ,  $D^7$ ,  $Gm^7$ .

**Section G:** Chords include  $C^7$ ,  $A^7$ ,  $Gm$ ,  $A^7$ ,  $D^7$ ,  $Dm$ ,  $Dm$ ,  $Dm$ ,  $G^9$ .

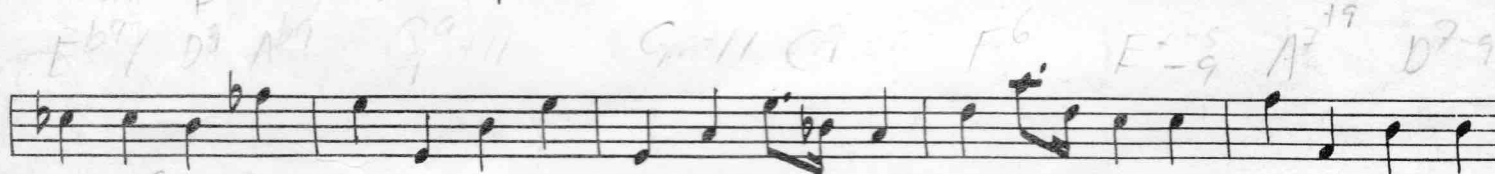
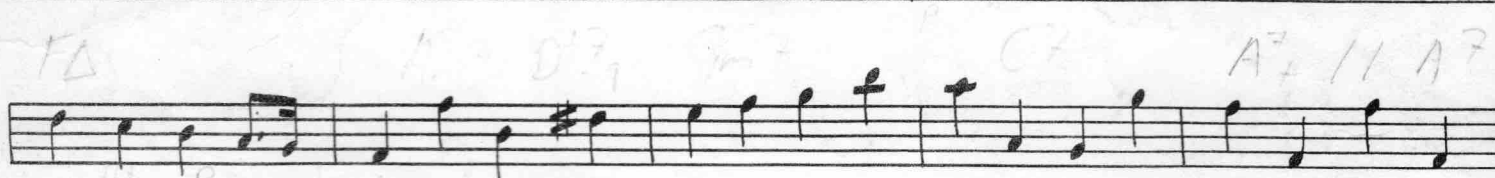
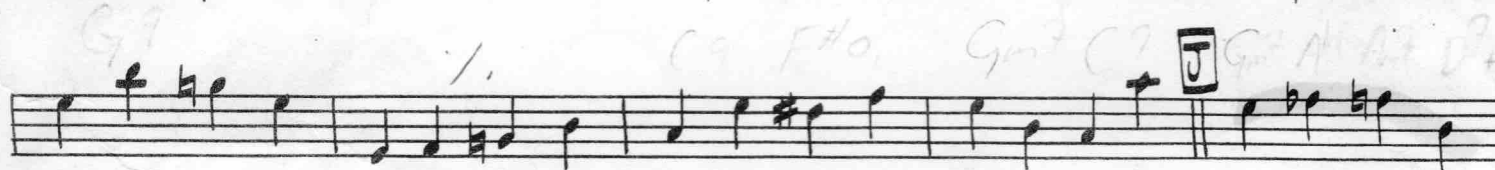
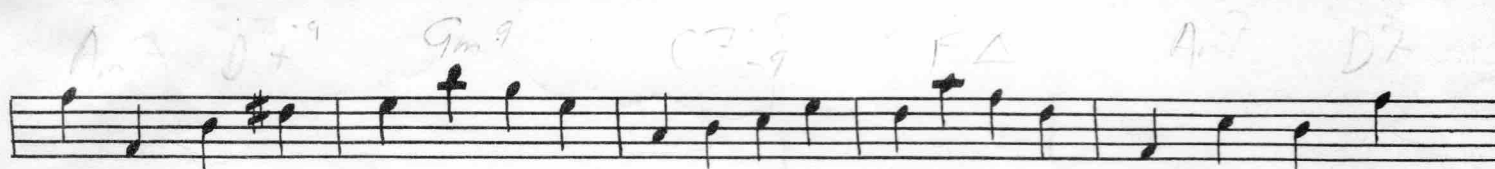
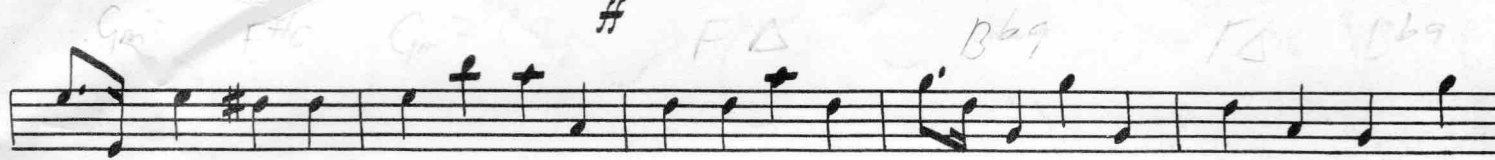
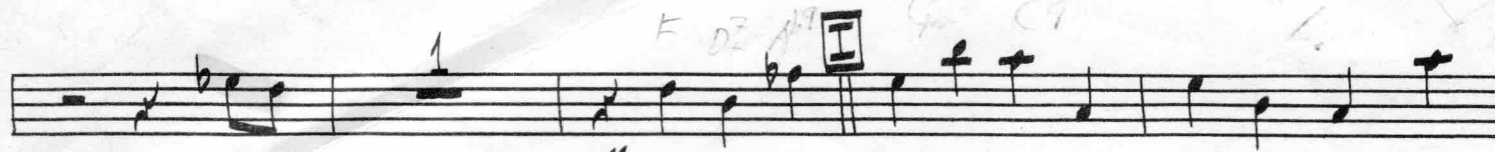
**Section H:** Chords include  $Gm^7$ ,  $C^7$ ,  $A^7$ ,  $D^7$ ,  $Gm$ ,  $F\Delta$ ,  $Gm^6$ ,  $Gm^7$ ,  $Gm$ .

**Section I:** Chords include  $Gm^7$ ,  $C^7$ ,  $F\Delta$ ,  $D^b9$ ,  $F\Delta$ ,  $D^b9$ ,  $A^7$ ,  $D^7$ .

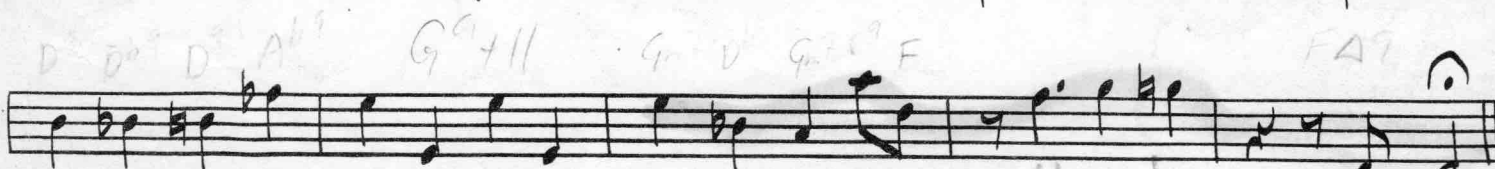
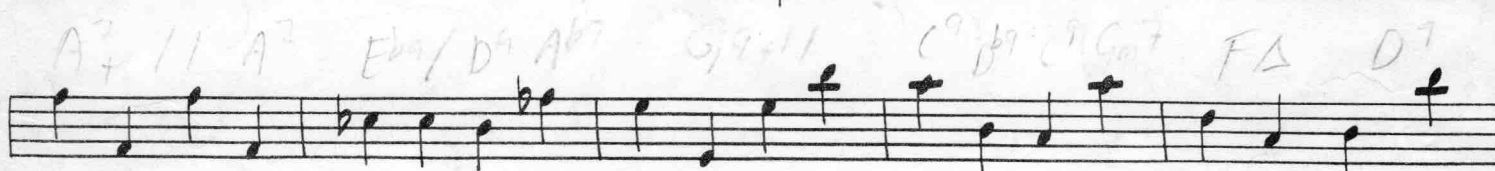
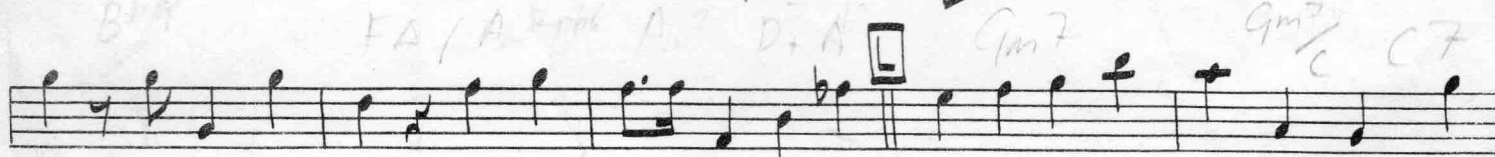
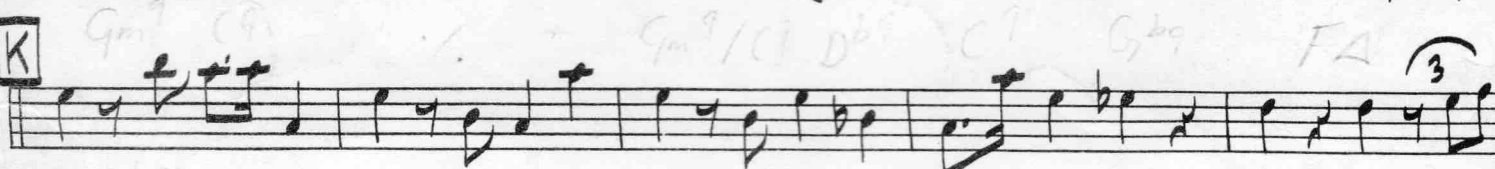
BASS - PG. 2

"THE QUEEN BEE"

H



K



Old ver 1

p